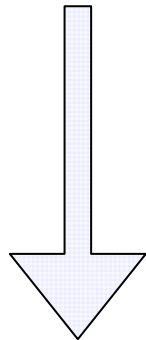
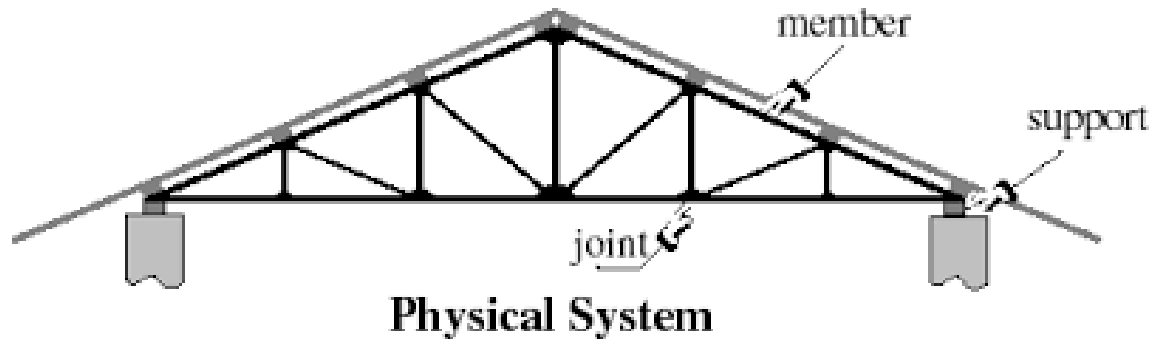


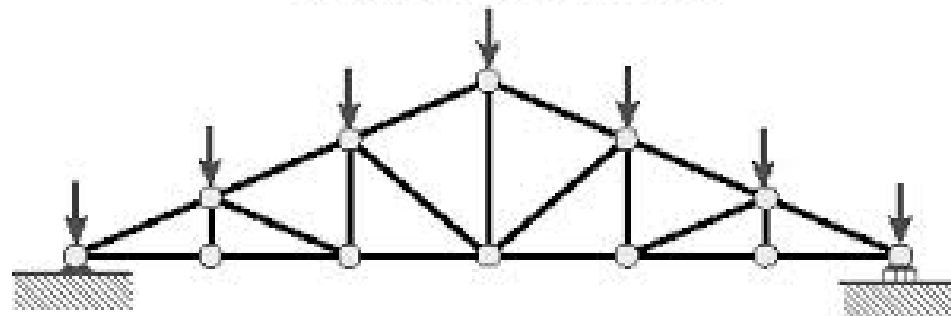
'hinge-joint' or 'pin-joint' model

REALITY
(RIGID JOINTS)
COMBINED INTERNAL FORCES (N,V,M)

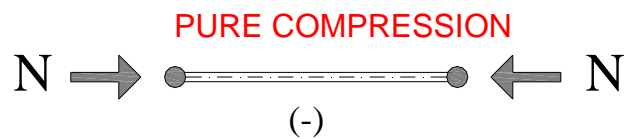
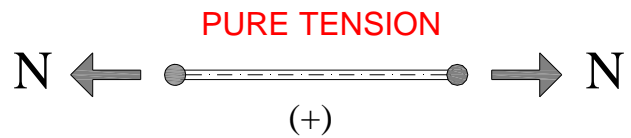
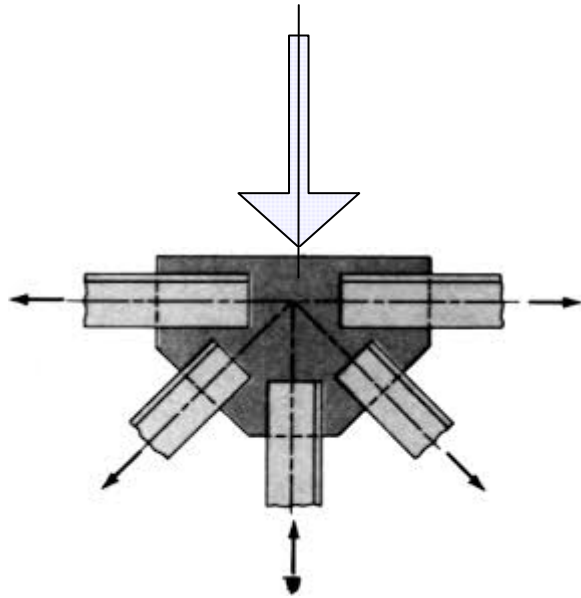


MODEL
(HINGE JOINTS)
AXIAL FORCES (N)

IDEALIZATION
Mathematical Model



the trusses hinge joints model



Statically determinate trusses

**- static analysis
stability and resistance evaluation
(ultimate limit states)**

**- kinematic analysis
deformation check
(serviceability limit states)**

'movable' supports (vertical restriction \rightarrow vertical reaction)



'hinged' or 'pinned' supports (vertical and horizontal restriction and reaction)

