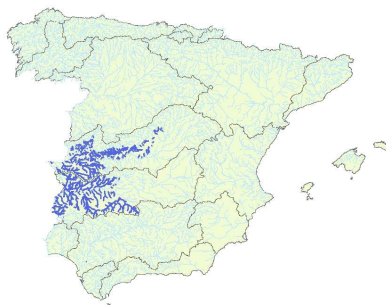


Natural flow regimes in rivers typology proposed in Spain

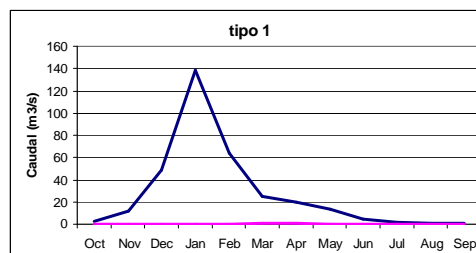
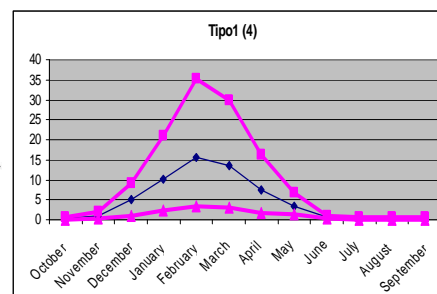
Diego García de Jalón

1

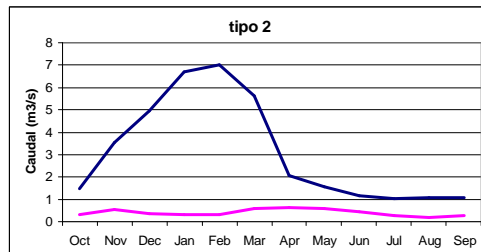
Tajo and Guadiana siliceous plains



- High seasonal, spatial and temporal variability



2 Guadalquivir valley

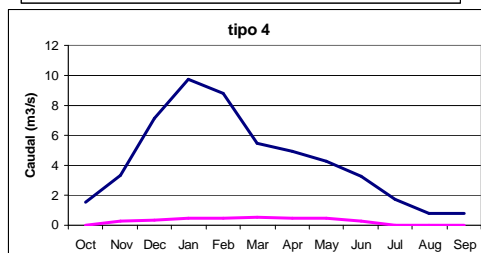
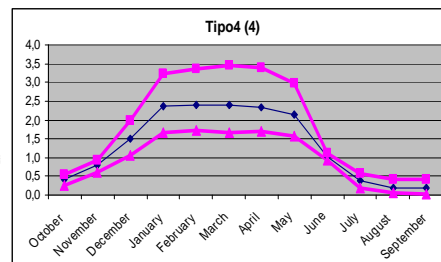


4

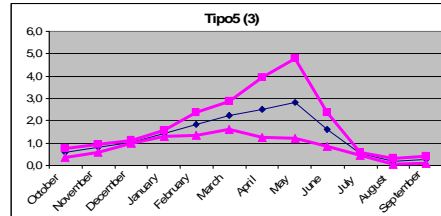
North Meseta Mineralized



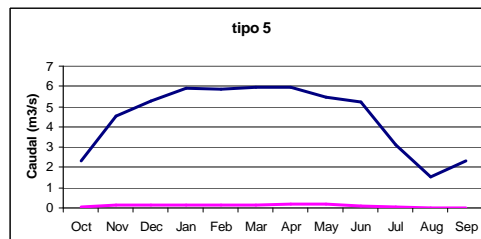
- Summer drought slightly marked



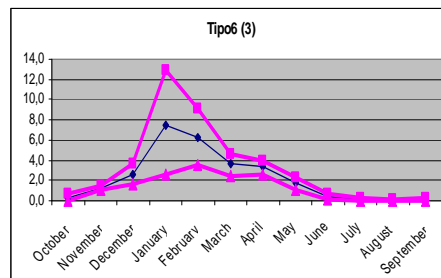
5 “Manchegos”



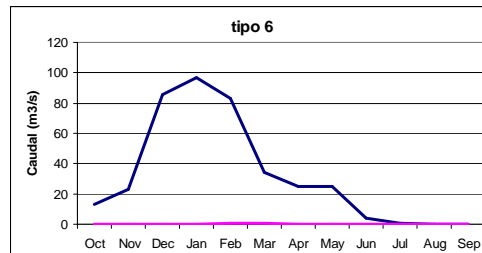
- Summer drought slightly marked



6 Silica of Sierra Morena piedmont



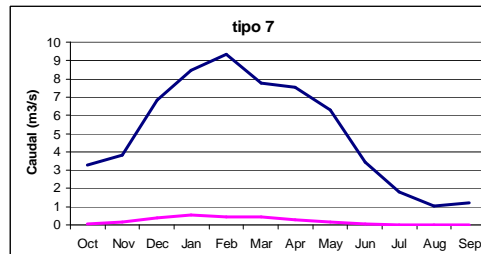
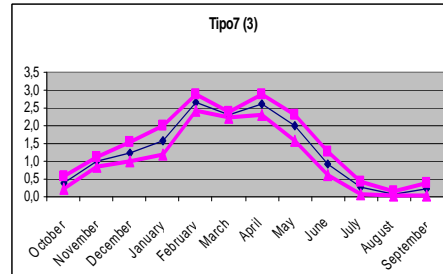
- High seasonal and temporal variability
- Summer drought strongly marked



7 Mediterranean low altitude mineralized



- Summer drought marked

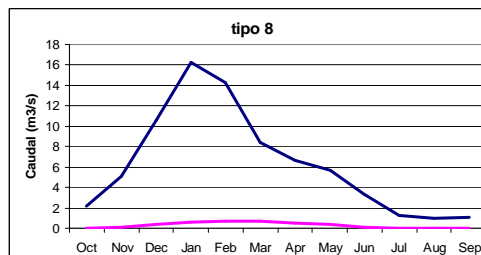
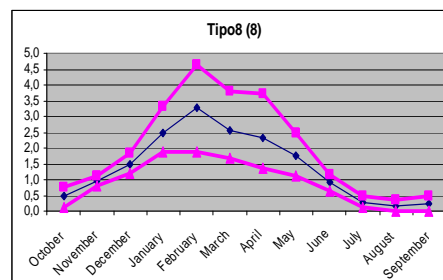


8

Mediterranean siliceous low mountain



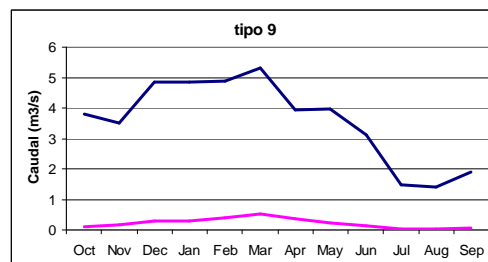
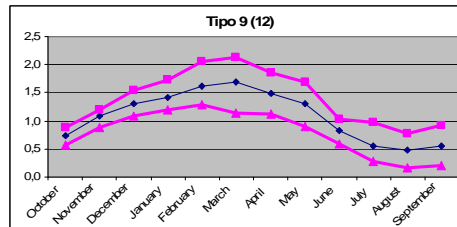
- Summer drought slightly marked



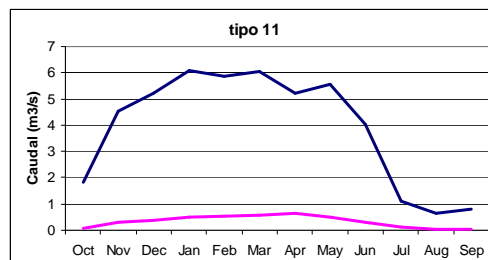
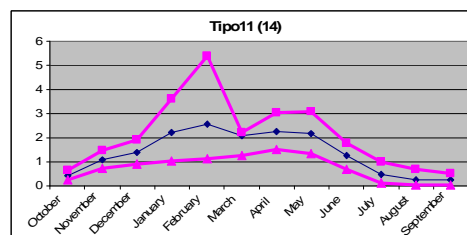
9 Mediterranean low mountain mineralized



Very low seasonal and spatial variability



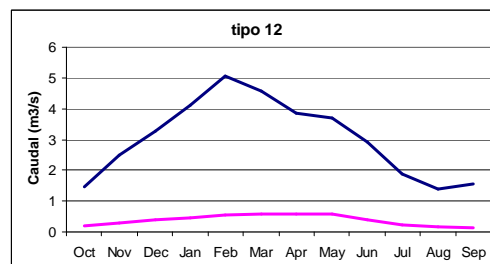
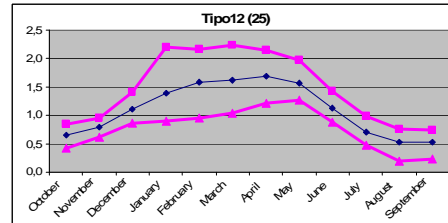
11 Mediterranean siliceous mountain



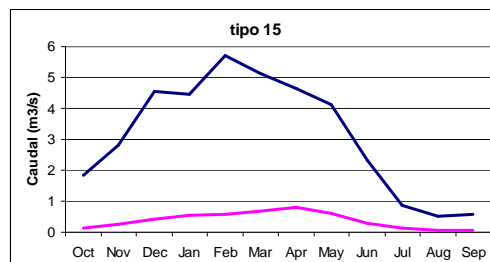
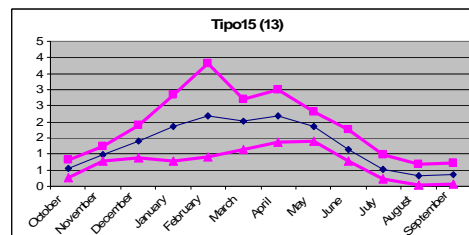
12 Mediterranean calcareous mountain



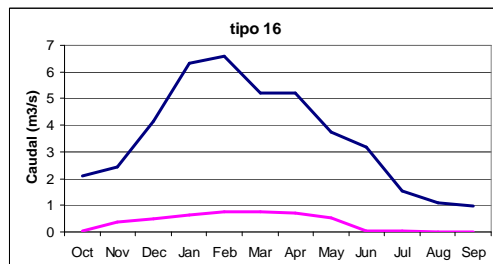
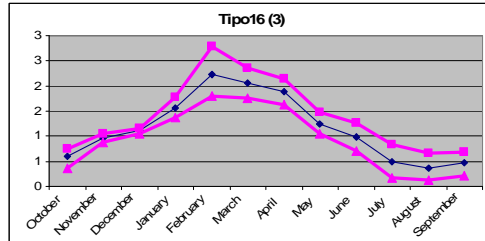
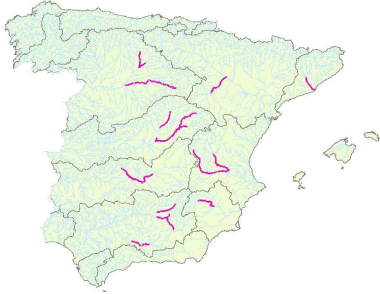
Very low seasonal and spatial variability



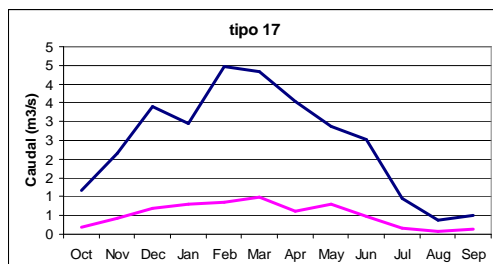
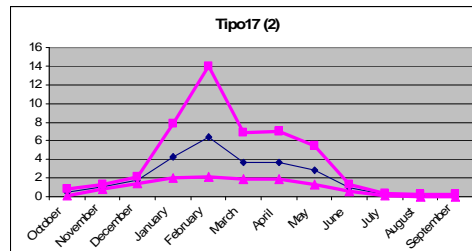
15 Mediterranean-continental little mineralized axes



16 Mediterranean-continental mineralized axes



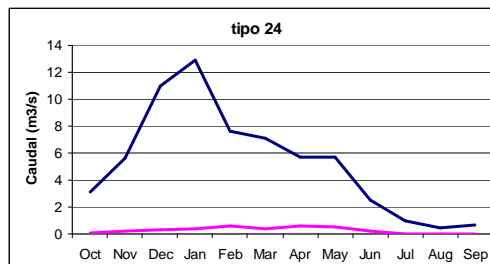
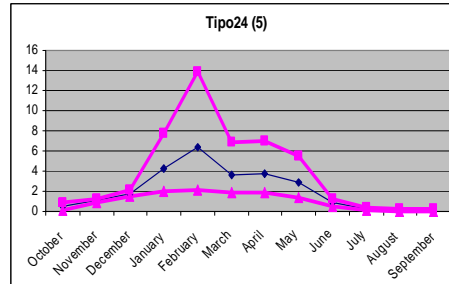
17 Large axes in Mediterranean environment



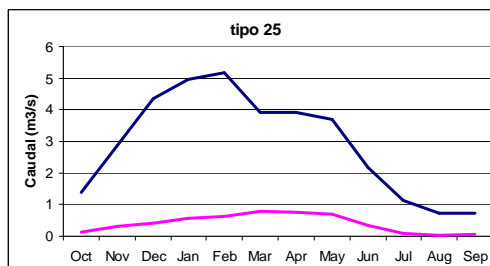
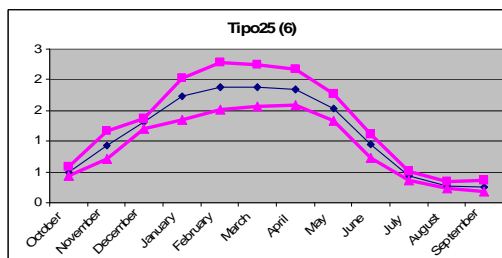
24 Gredos-Béjar gorges



- Strong seasonal variability
- Summer drought marked



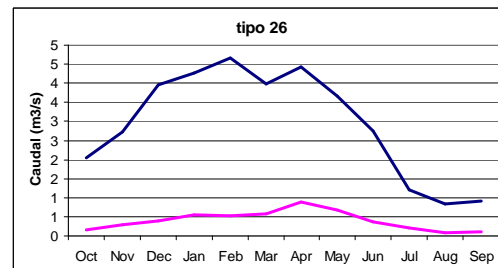
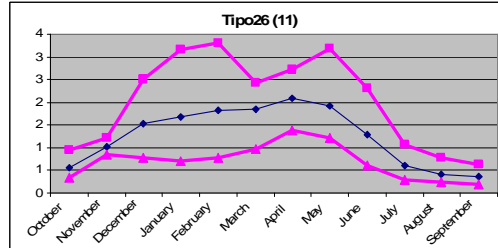
25 Siliceous humid mountain



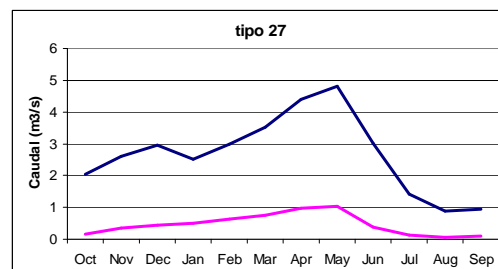
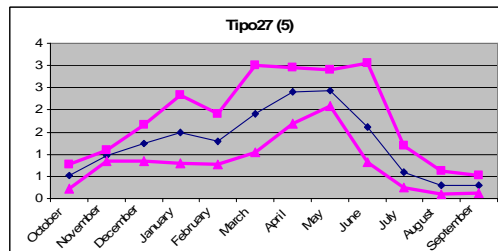
26 Calcareous humid mountain



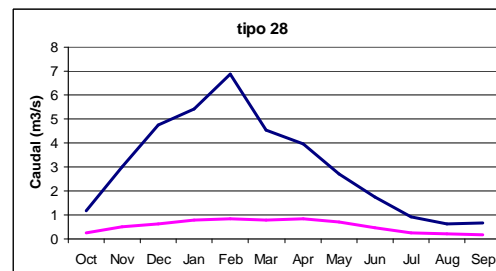
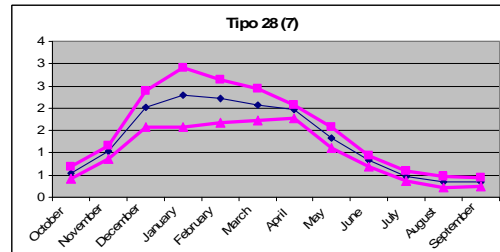
Low temporal, seasonal and spatial variability



27 High mountain



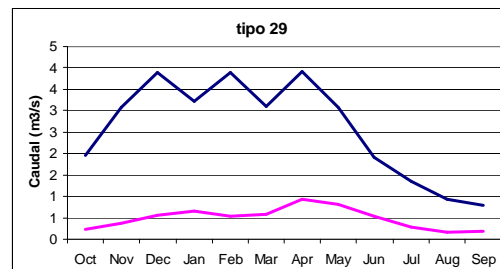
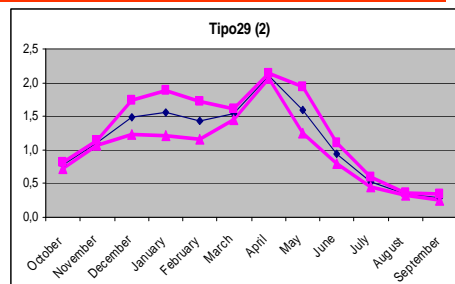
28 Cantabrian-Atlantic main fluvial axes



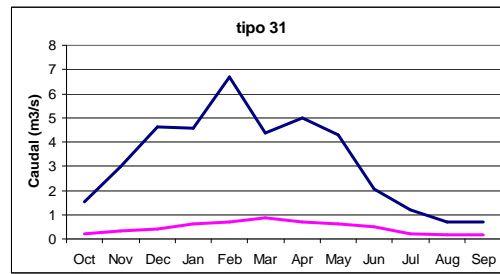
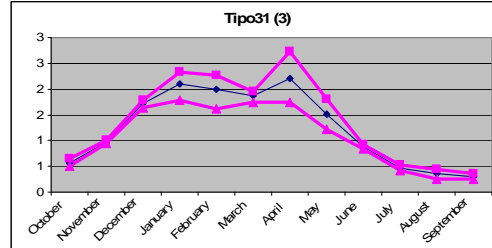
29 Cantabrian-Atlantic calcareous main fluvial axes



Low temporal, seasonal and spatial variability



31 Cantabrian-Atlantic small siliceous axes



32 Cantabrian-Atlantic small calcareous axes

