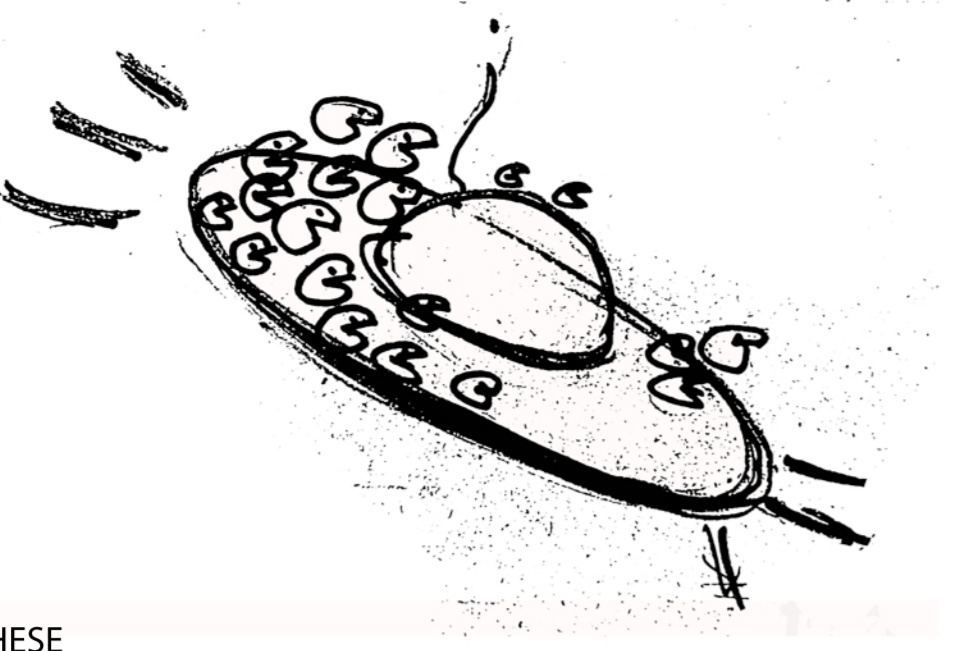
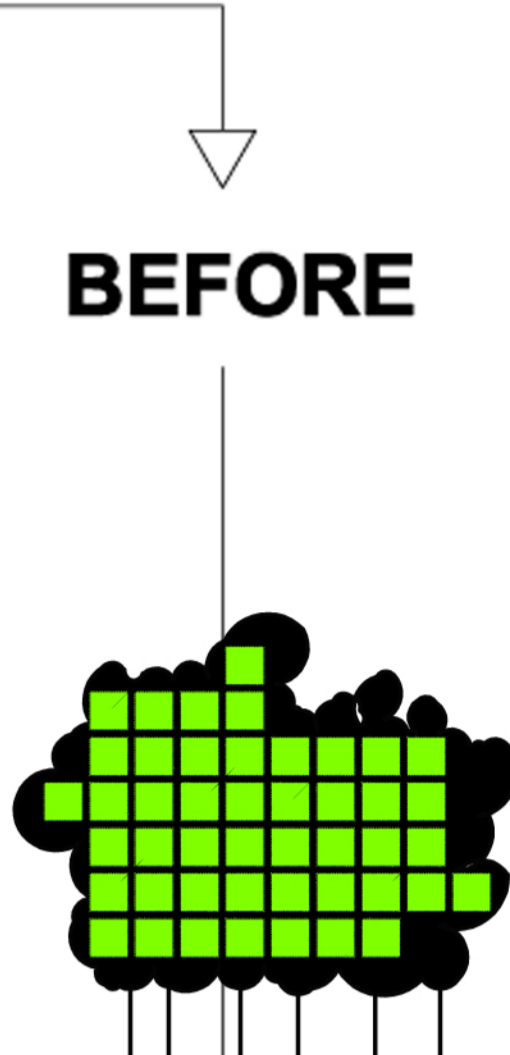
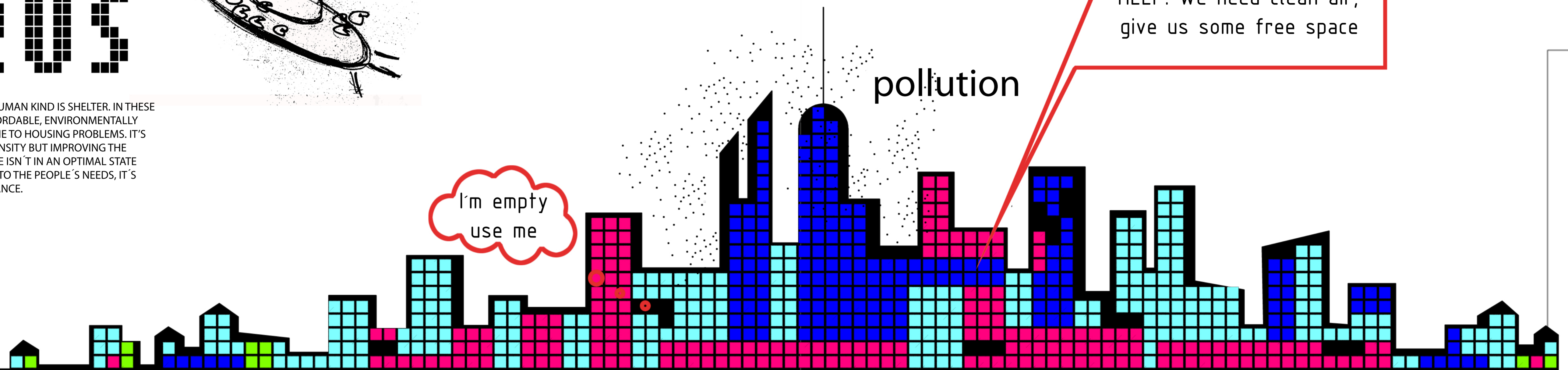
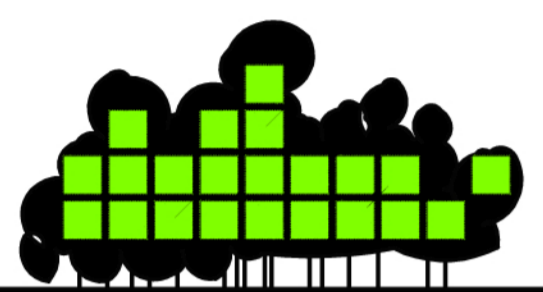


# QUALITY VIRUS



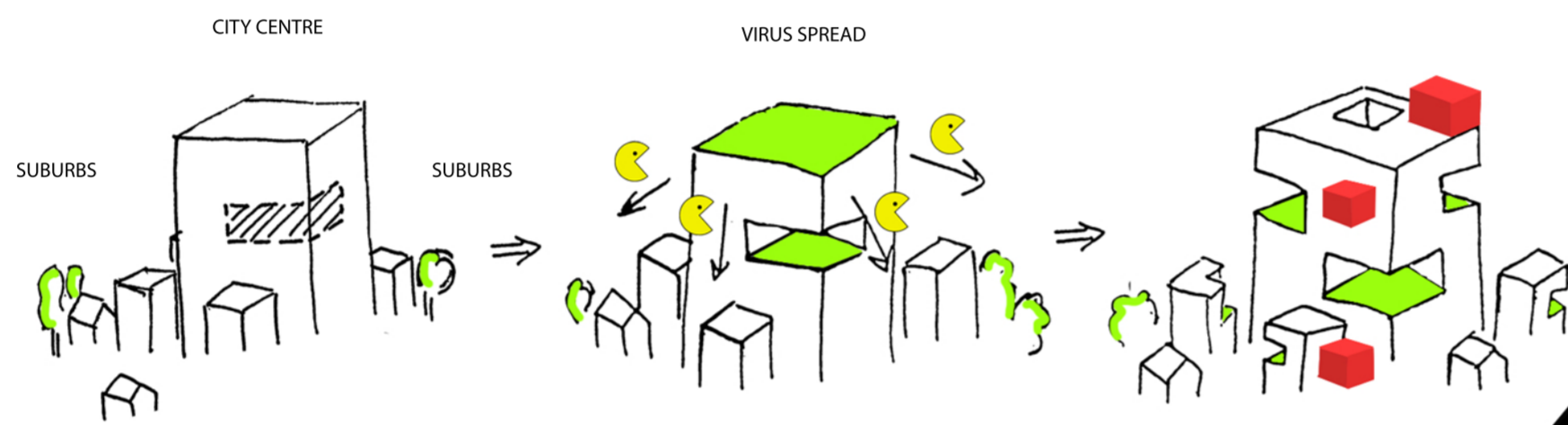
ONE OF THE PRIMARY NEEDS OF HUMAN KIND IS SHELTER. IN THESE TIMES OF CRISIS WE NEED AN AFFORDABLE, ENVIRONMENTALLY FRIENDLY SOLUTION FOR EVERYONE TO HOUSING PROBLEMS. IT'S NOT A MATTER OF INCREASING DENSITY BUT IMPROVING THE QUALITY OF LIVING. THE CITY'S USE ISN'T IN AN OPTIMAL STATE AND BY ADAPTING IT ACCORDING TO THE PEOPLE'S NEEDS, IT'S POSSIBLE TO ACHIEVE A NEW BALANCE.



## PROBLEMS

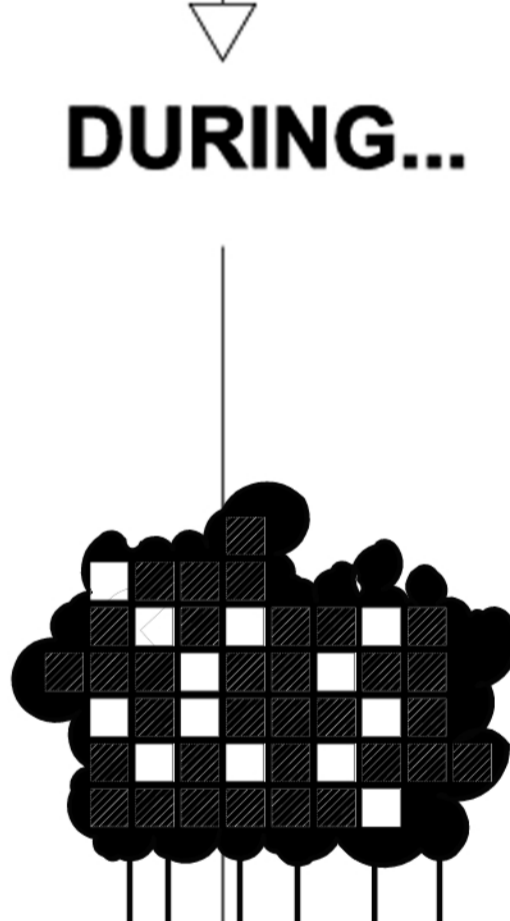
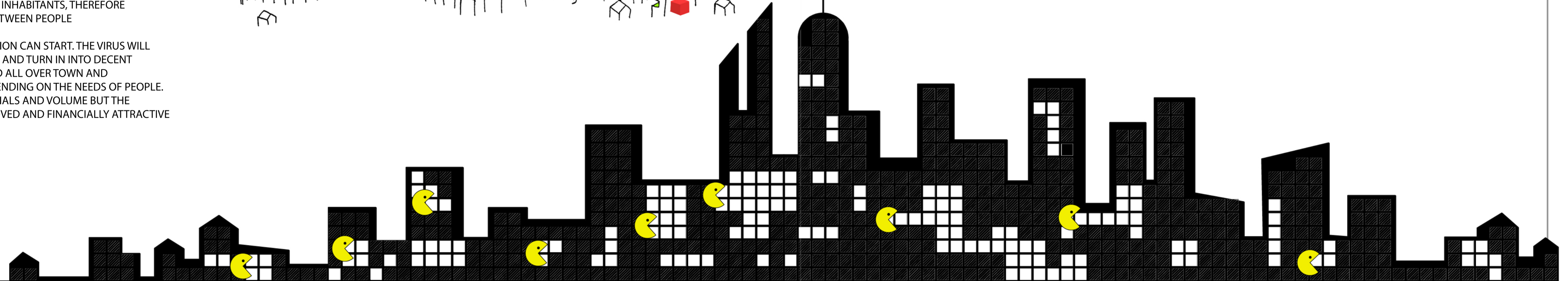
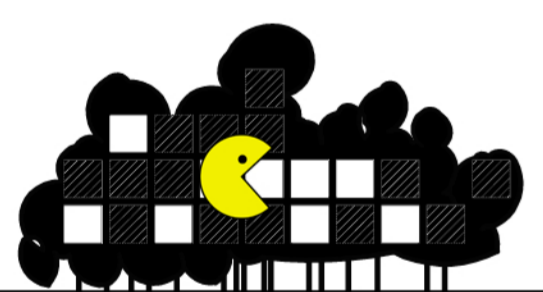
- CITY CENTRES ARE OVERCROWDED
- CITIES EXPAND TO THE OUTSKIRTS
- SUPPLY AND DEMAND ARE NOT IN BALANCE
- GREAT AMOUNT OF EMPTY DWELLINGS X GREAT DEMAND FOR HOUSING IN CITY)
- ZONATION OF FUNCTIONS
- DEFICIT OF PUBLIC SERVICES IN SUBURB

THE VIRUS WILL ATTACK ON ROTTEN, UNUSED AND UNLOVED PARTS OF TOWN AND REPLACE THEM WITH NEW PUBLIC SPACES THAT CAN BE SHARED BY THE SURROUNDING INHABITANTS, THEREFORE CREATING NEW RELATIONSHIPS BETWEEN PEOPLE



TYPE OF UNITS: ■ HABITANTS ■ PUBLIC ■ WORKING ■ GREENERY

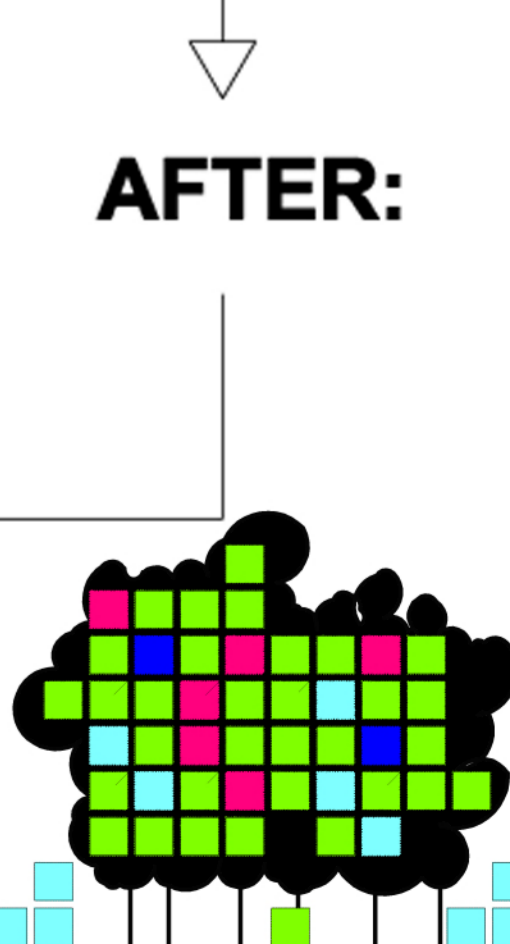
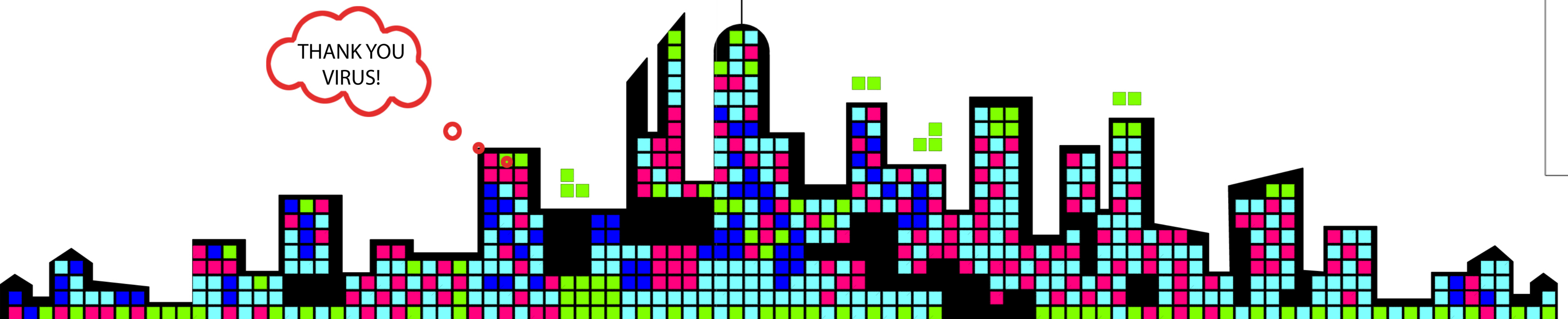
AFTER DESTRUCTION, CONSTRUCTION CAN START. THE VIRUS WILL RECYCLE WHAT IT HAS CONSUMED AND TURN IN INTO DECENT LIVING UNITS THAT CAN BE PLACED ALL OVER TOWN AND CONNECTED TO EACHOTHER, DEPENDING ON THE NEEDS OF PEOPLE. THERE WILL BE NO LOSS OF MATERIALS AND VOLUME BUT THE QUALITY OF LIVING WILL BE IMPROVED AND FINANCIALLY ATTRACTIVE HOUSING WILL BE CREATED.



## SOLUTIONS

- PRODUCTION OF FREE (GREEN) SPACES IN CENTRE
- MOBILITY OF DWELLINGS FOR BALANCE BETWEEN DENSITY OF CENTRE AND SUBURBS AND BALANCE BETWEEN SUPPLY AND DEMAND
- DISPLACEMENT OF HOUSING FROM CENTRE TO SUBURB
- DIFFUSION OF FUNCTION IN THE CITY
- CREATION OF PUBLIC SERVICES IN SUBURB

EVENT:  ALREADY EATEN CELLS ☉ PACKMAN'S ROAD



THANK YOU VIRUS!