



\_NEW YORK CITY

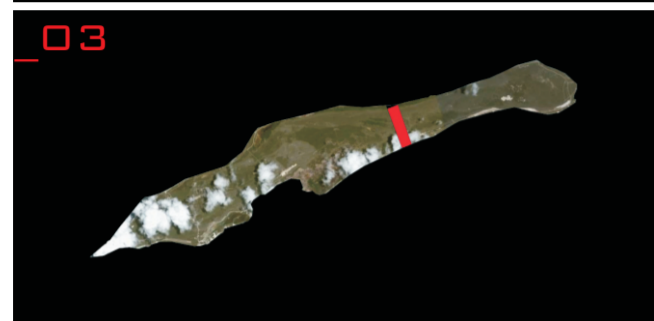
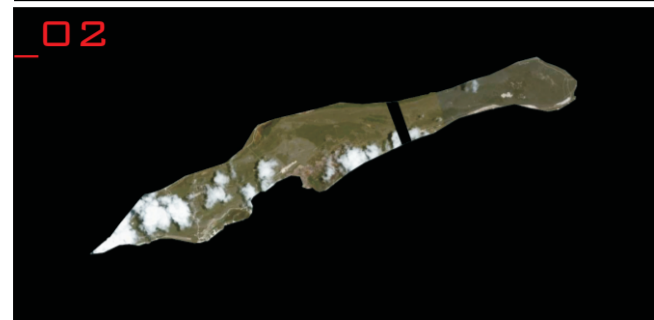
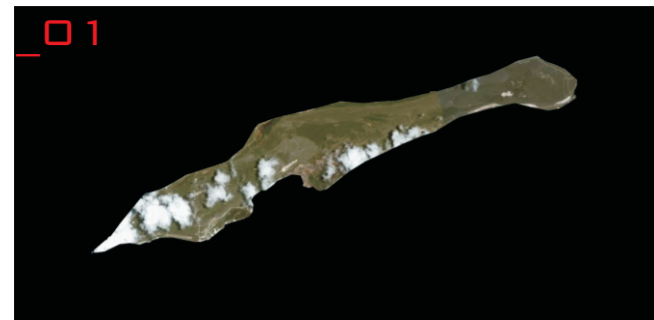


\_SHANGHAI



\_SYDNEY

...SAVE THE WORLD\_"DESTROY" THE ISLAND...



SITUATION NOW

THE BEGINNING OF CONSTRUCTION

FINDING THE SOLUTION

DURING SIX MONTHS

SOLUTION

HEALING

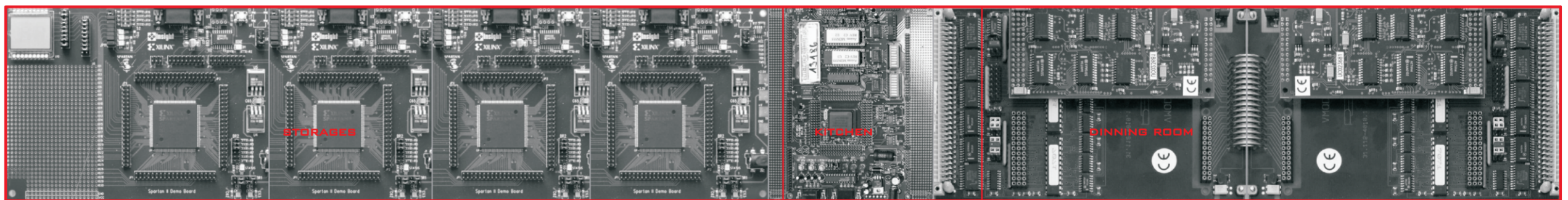
THE IDEA IS TAKING A PART OF THE ISLAND AND GIVING IT BACK WHEN THE SOLUTION OF THE CRISIS IS FOUND. IT'S THE CREATION OF AN LIVING INDEPENDENT SYSTEM WHICH SHOWS UP AS A SHIP AT EVERY HOTSPOT OF THEWORLD.

THE JOURNEY OF OUR SYSTEM IS LIKE TRAVELLING AROUND THE WORLD FOR 6 MONTHES. THE PROGRESS OF SOLVING THE PROBLEM IS HAPPENING DURING THE 6 MONTHS AND THE SOLUTION IS SYMBOLIZED BY RECREATING THE ISLAND.

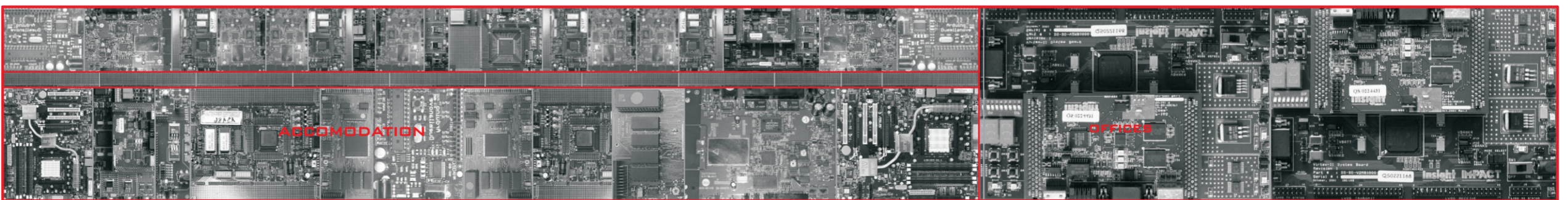
THE BRANDS STAND FOR THE ECONOMY WHICH SHOULD BE SAVED. THE TREES ARE A SYMBOLIC CONNECTION TO THE ISLAND. IT IS A KIND OF IMAGINATION OF AN ARTIFICIAL ISLAND.



THE FLOOR PLAN IS SEPARATED VERY SIMPLY AND FOR THE ILLUSTRATION WIRED BLANKS ARE USED. THE MEANING OF THESE WIRED BLANKS IS THAT THE BUILDING SHOULD WORK LIKE A COMPUTER. COMPUTERS ARE MADE FOR SOLVING PROBLEMS AND THIS IS THE TASK FOR THE BUILDING. THE WIRES CAN BE SEEN AS THE CONNECTIVE ELEMENT BETWEEN THE PEOPLE WHO ARE WORKING THERE.



GROUND FLOOR



FIRST FLOOR

...SAVE THE WORLD\_"DESTROY" THE ISLAND...