

*Fieldworks contribution
to the evolution of the
body of knowledge*

Adolfo Cazorla

Agricultural Engineer

PhD. in Projects and Rural Planning

Year 2010/11

**Master's in Projects Planning for Rural
Development and Sustainable Management**

Fieldworks contribution to the evolution of the body of knowledge

- 1.- Rural areas planning:
Endogenous development basis
Example of the southwestern region of Madrid
- 2.- The social aspects in planning: Murcia
- 3.- Development planning: Piura - Sullana

AIMS OF THE WORK

CURRENT

Agricultural activities and environmental repercussion
Inhabitants, endogenous development of the region

HISTORICAL

Evolution over time 1977-82-87
Sensitive areas and their protection

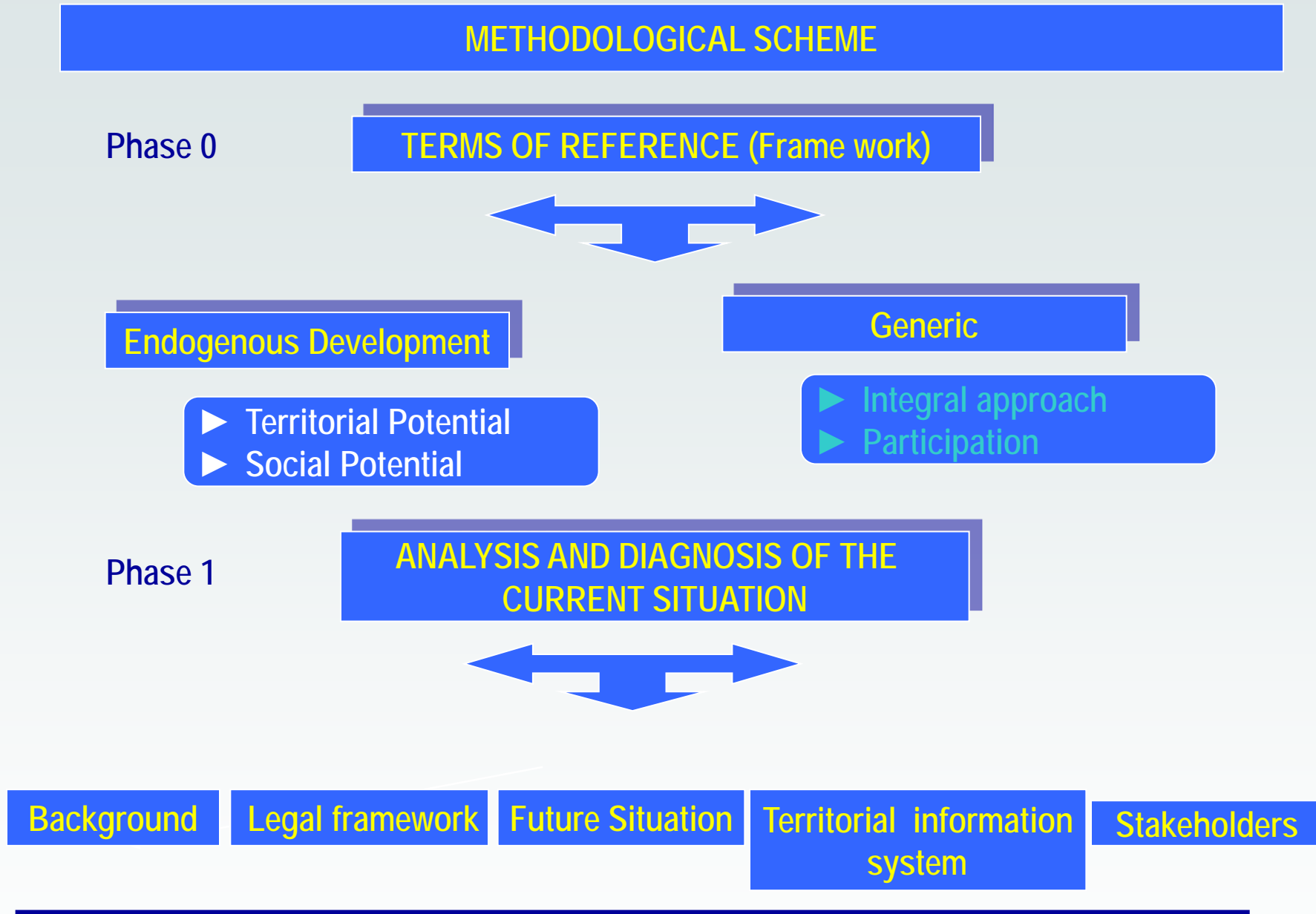
FUTURE

Impacts due to european funds

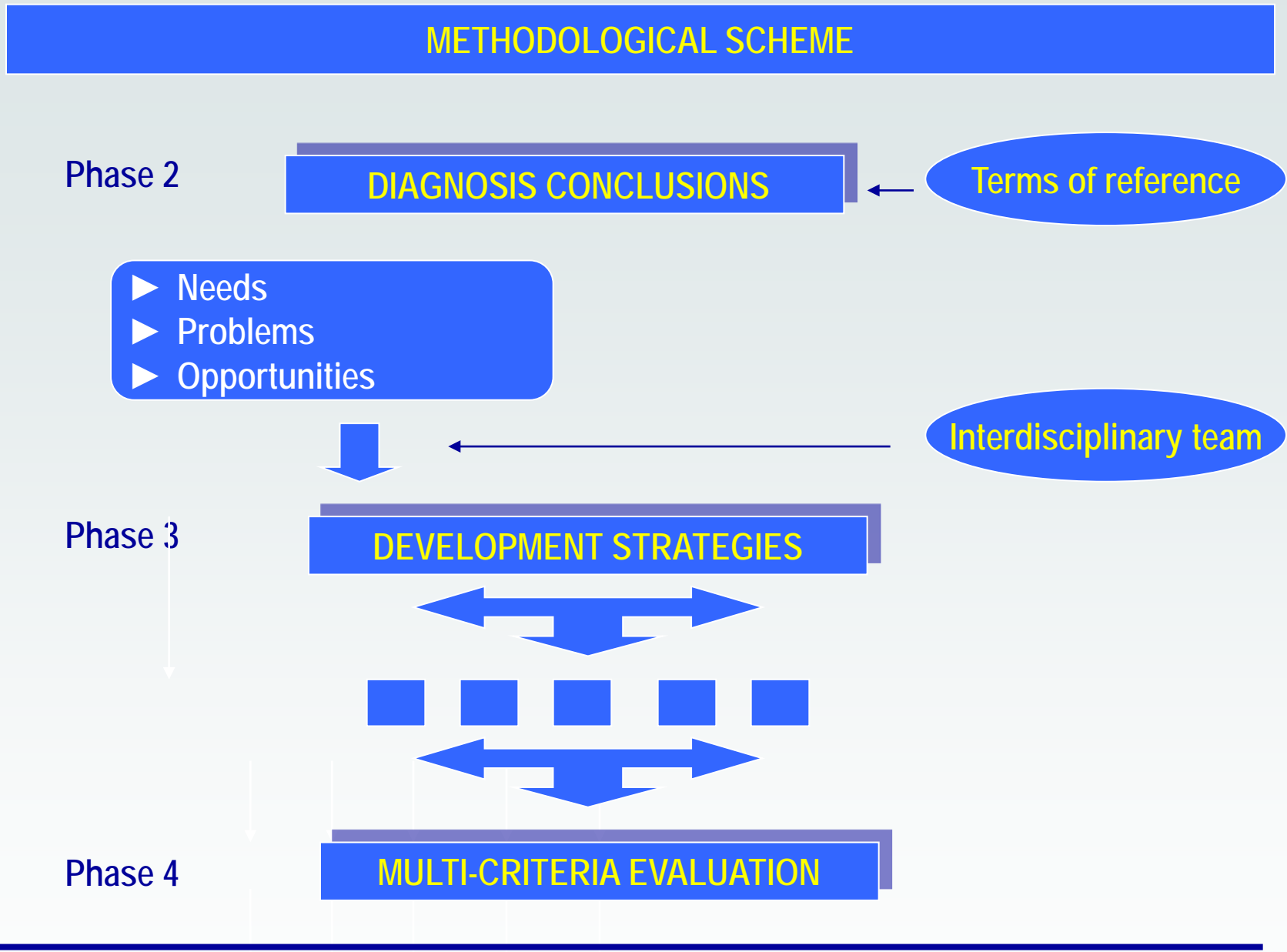
1.- Rural areas planning: Endogenous development basis
Example of the southwestern region of Madrid

- TERMS OF REFERENCE → GENERIC
 UNCERTAINTY
- SOCIAL INCLUSION TO A CERTAIN
 LEVEL "GENERATION"
- SELECTION OF ALTERNATIVES BY THE TEAM
- DEVELOPMENT STRATEGIES NOT TOTALLY LED
 TO THE SUBSTANCE OF THE ISSUE
- "OBJECTIVE" TERRITORIAL DIAGNOSIS WITH A
 NEW METHODOLOGY

1.- Rural areas planning: Endogenous development basis
 Example of the southwestern region of Madrid



1.- Rural areas planning: Endogenous development basis
Example of the southwestern region of Madrid



1.- Rural areas planning: Endogenous development basis
Example of the southwestern region of Madrid

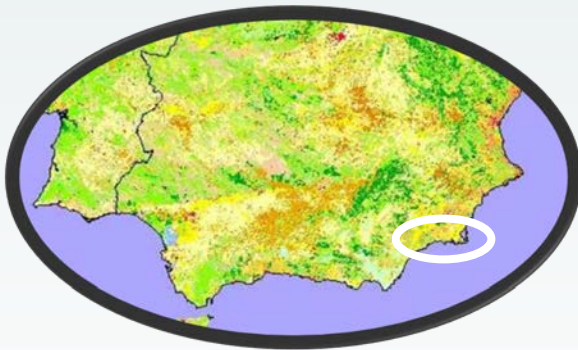
Technical mining, socioeconomic and environmental study of the affected areas by mining in the municipalities of Cartagena and La Unión.

Regional Ministry of Economy, Industry and Trade of Murcia

**School of Agricultural Eng.
School of Forest Eng.
School of Mining Eng.
1991-1992**



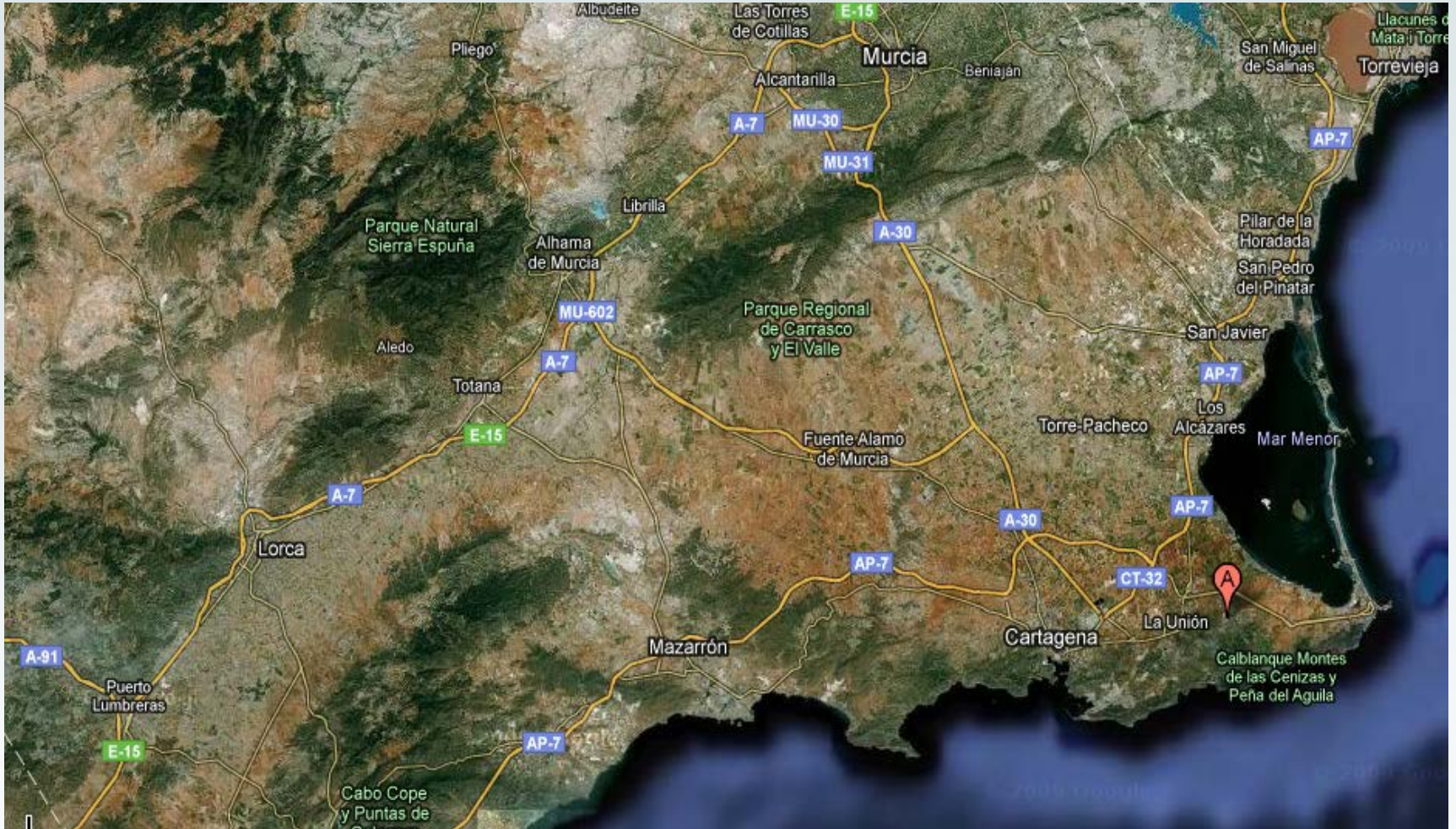
2.- The social aspects in planning: Murcia



15 participating researchers



2.- The social aspects in planning: Murcia



2.- The social aspects in planning: Murcia



2.- The social aspects in planning: Murcia



2.- The social aspects in planning: Murcia



2.- The social aspects in planning: Murcia



2.- The social aspects in planning: Murcia



2.- The social aspects in planning: Murcia

Llano del Beal



2.- The social aspects in planning: Murcia

Llano del Beal



2.- The social aspects in planning: Murcia



2.- The social aspects in planning: Murcia



2.- The social aspects in planning: Murcia



2.- The social aspects in planning: Murcia



2.- The social aspects in planning: Murcia



2.- The social aspects in planning: Murcia



2.- The social aspects in planning: Murcia

CONFLICT OF INTERESTS

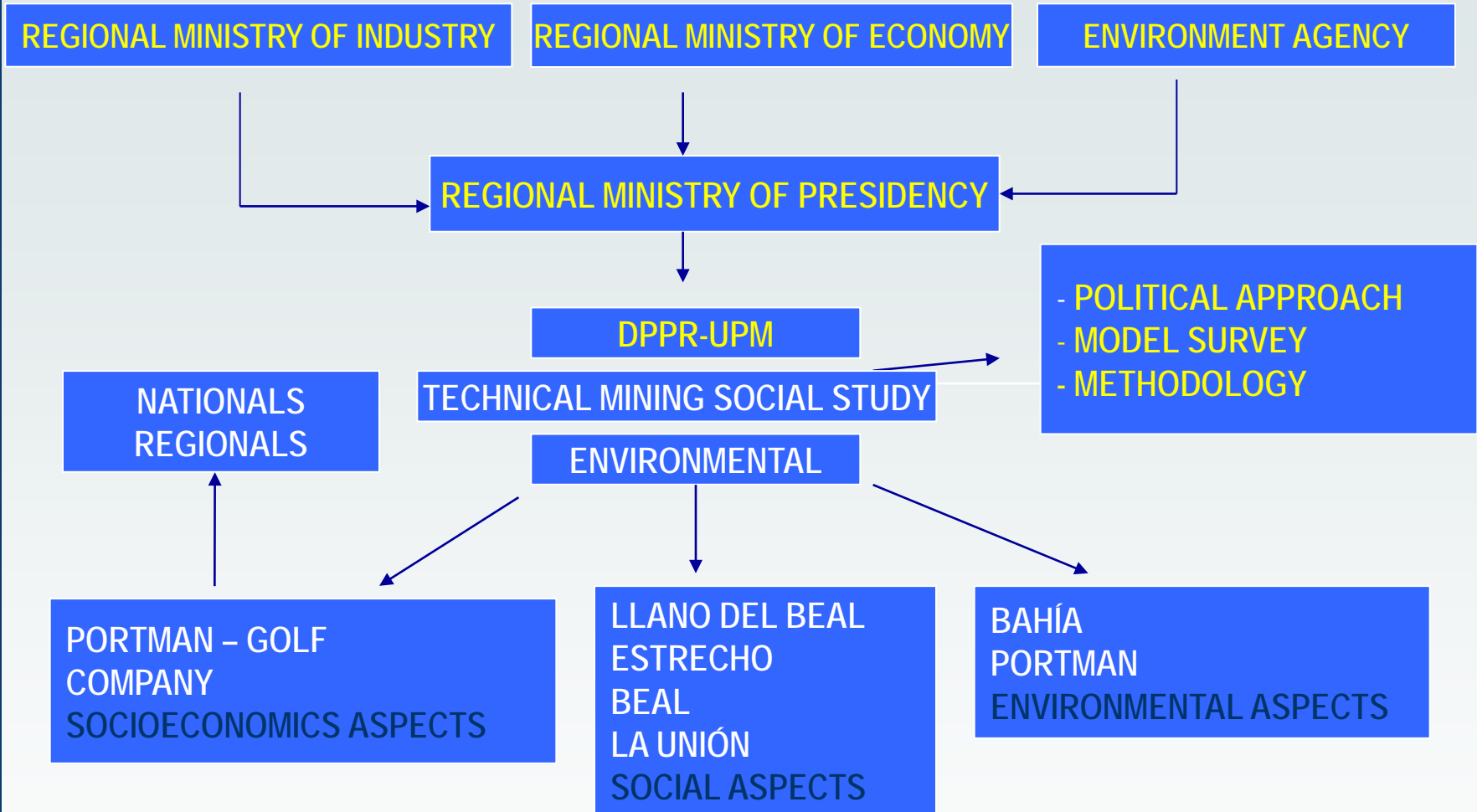
- 1) NATIONAL LEVEL: PRODUCTION OF METALS, EXTERNAL ACCOUNTS
- 2) REGIONAL LEVEL: SEVERAL COMPANIES CONNECTED WITH THESE PRODUCTIONS. "ESPAÑOLA DEL ZINC"
- 3) JOBS OF THE COMPANY
- 4) LOCAL LEVEL: THE VILLAGE WITH ITS HISTORY, CULTURE AND PEOPLE IS BEING THREATENED
- 5) COMMUNITY LEVEL: ENVIRONMENTAL POLLUTION



IF IT IS POSSIBLE, RECONCILE EVERYTHING THROUGH AN INTERDISCIPLINARY STUDY INCLUDING:

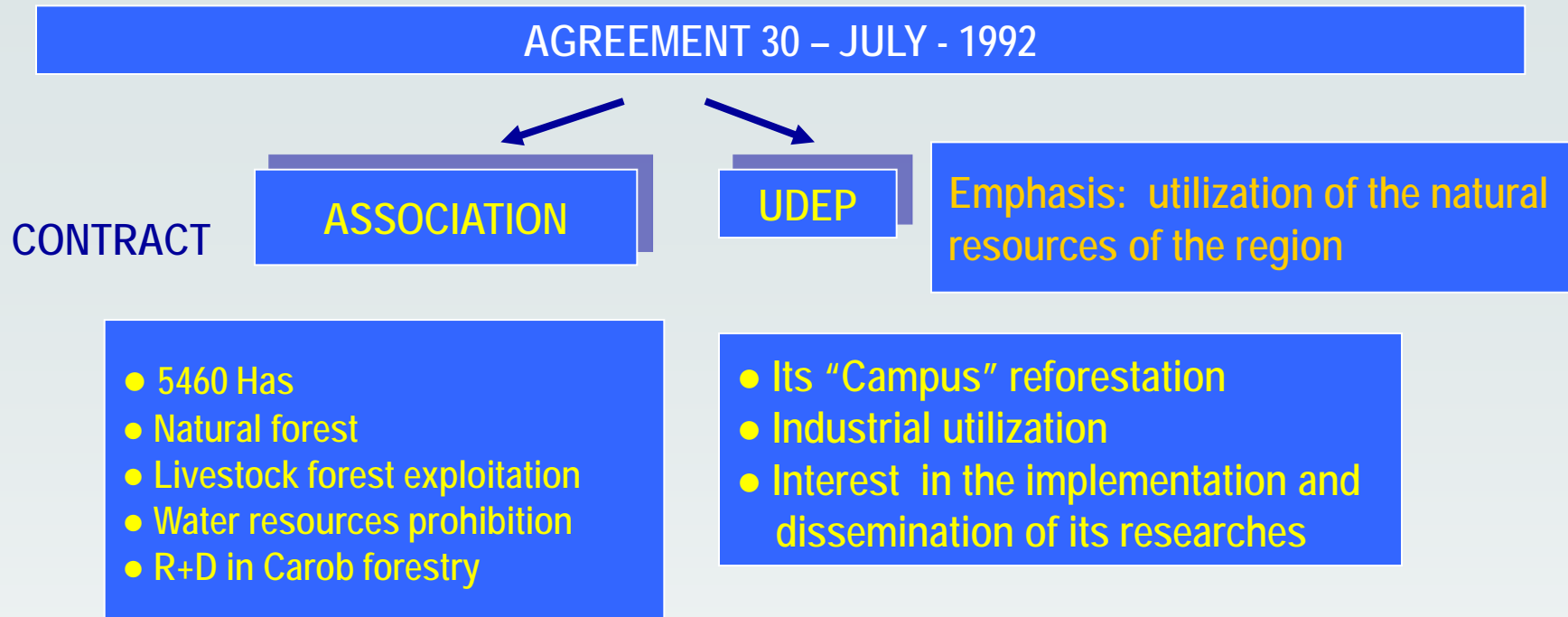
- | | |
|-----------------------------|-------------------------------|
| - FOREST DEPARTMENT | BAY RECOVERY |
| - RURAL PLANNING DEPARTMENT | PEOPLE AND ITS INHABITANTS |
| - MINING DEPARTMENT | ECONOMY OF THE MINING COMPANY |

2.- The social aspects in planning: Murcia



A POSSIBLE POLITICAL UNILATERAL ACTION WITH A THOUSANDS OF MILLIIONS EXPENDITURE

2.- The social aspects in planning: Murcia

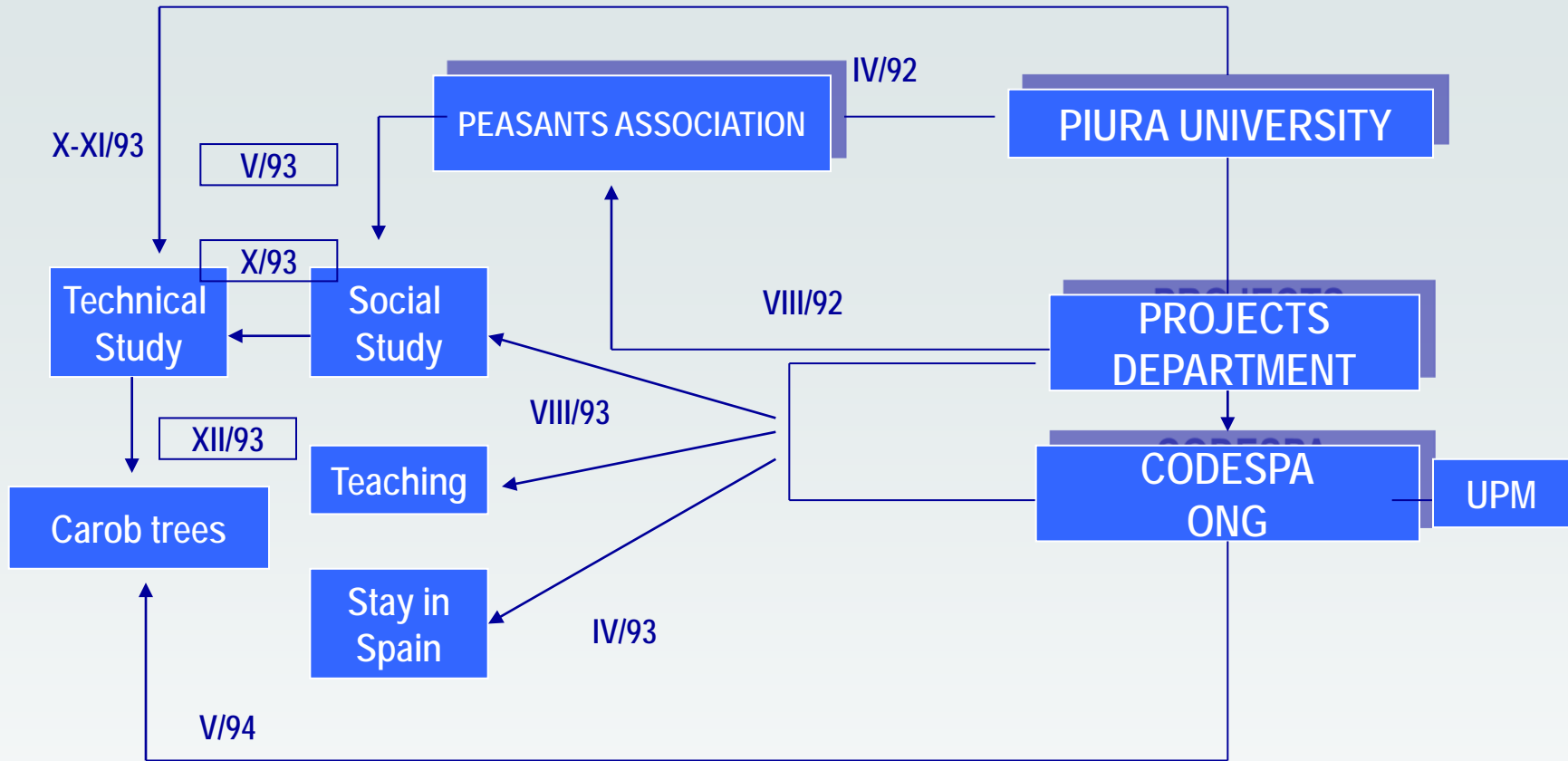


PARTICULAR CASE OF PARTICIPATORY ACTION RESEARCH

AIMS OF THE AGREEMENT

- CURRENT FOREST SITUATION: STUDY
- ESTABLISHMENT OF EXPLOITATION AND FOREST MANAGEMENT PROGRAMMS
- STORAGE UNITS: IMPLEMENTATION
- ESTABLISHMENT OF CAROB TRANSFORMATION PILOT PLANT
- LIVESTOCK AND APICULTURE ACTIVITIES
- MARKETING OF FOREST PRODUCTS
- STRENGTHEN THE COMMUNAL ORGANITATION

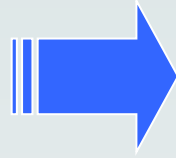
3.- Development planning: Piura – Sullana



- Association/University Relationship → dynamism
- UDEP → UPM → ETSIA
 - TEACHING
 - CONSULTING
- Advance resources once it has been technically studied and after taking contact with the social reality

3.- Development planning: Piura - Sullana

FROM BLUE PRINT
MODEL



TRANSACTIVE
PLANNING

- | | | |
|-----------------------|----------------------------------|---------------------|
| Research/action | ● Participatory Action Research: | William Foot White. |
| Product → Person | ● Learning Process Aproach: | David C. Korten |
| European variant | ● Putting the last first: | Robert Chambers |
| Development/knowledge | ● Interactive planning: | Rusell L. Ackoff |
| Project cycle | ● Putting the people first: | Michael M. Cernea |
| Dialogue | ● Transactive Planning: | John Friedmann |

REGIONAL PLANNING → SOCIAL LEARNING

ORIGIN: Lewis Mumford and John Dewey

↓
Evolution

↓
Mutual learning ✓ Process consultation: **Edgar H. Schein**
(client and consultant, 1969)

↓
Small learning group ✓ Process of social learning: **Edgard S. Dum. Ford**, 1971

↓
Group dynamics ✓ Action Science: **Chris Argyris and Donald Schön**

↓
Knowledge for Action: **Argyris**

↓
Dialogue: **Friedmann, J.**
(vid 6')

NON-EUCLIDEAN PLANNING METHODOLOGY: NETWORK 2002-2008

- ▶ Retracking America, Friedmann, J.
- ▶ People centered development, Korten et al.
- ▶ Planning as Social Learning, Friedmann, J.

METHODOLOGY

Basic characteristics:

- INNOVATIVE
- POLITICAL
- NORMATIVE
- NEGOCIATING
- BASED ON SOCIAL LEARNING

